

# kitchen+bath makeovers

**FIND  
SPACE  
YOU DIDN'T  
KNOW  
YOU HAD**

**budget  
friendly**  
projects & products  
for a *fresh look*

**Quick fix:**  
Update a  
basic bath p. 18

**15 AMAZING  
REAL-LIFE MAKEOVERS**

SPRING 2015  
Display until May 26

\$5.99 U.S.



BHG.com/KitchenBath





**OPPOSITE:** A custom 8-foot vanity fits the width of the enlarged master bath. "I have a lot of hair products," homeowner Meredith Candler says. "We doubled the size of the vanity so my husband and I could have separate drawers." **LEFT:** Penny-round tiles, which debuted in the early 1900s when this home was built, line the tub and shower niches and the vanity wall.



**Room size**  
154 sq ft

**Budget**  
\$17,377

**Why we love it**  
Wood planks nod to the home's roots.

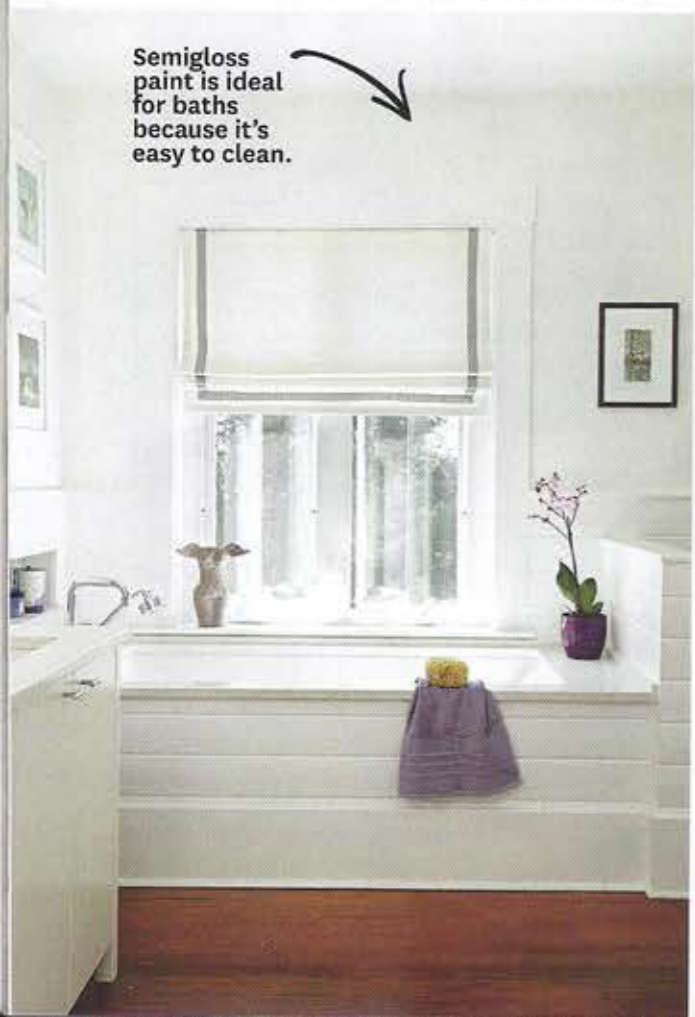
# border crossing

Modern finishes mix with historic details in an expanded master bath.

WRITER AND FIELD EDITOR LISA MOWRY  
PHOTOGRAPHER BRIE WILLIAMS  
STYLIST ANDREA CAUGHEY







Semigloss paint is ideal for baths because it's easy to clean.

## sharing space

isn't the most efficient way to power through morning routines. "For the last 14 years of marriage, my husband and I shared a teeny-tiny bathroom," Meredith Candler says of her 1906 home in Asheville, North Carolina.

Borrowing space from nearby closets for an expansion allowed designer Leslie Huntley to tackle a large wish list for the new 14x11-foot space: two sinks and tons of vanity storage, a private toilet area, a separate shower and tub, and a linen closet. A custom vanity solved two problems. "Since Meredith wanted oodles of storage, we added deep drawers so she could fit her hair products," Huntley says. The extra drawers also created countertop space between the sinks.

Huntley balanced the modernity of the vanity with classic penny-round tile on the wall. Quartz-surfacing countertops provide the bright-white look the homeowners wanted.

The shower includes both handheld and overhead showerheads. A half-wall—tiled on the shower side—provides privacy for the toilet. The corner of the room with an added window became the ideal spot for a bathtub, built in with a quartz-surfacing surround and wood-plank trim.

While the spacious floor plan makes morning routines less stressful, Meredith particularly loves the light from the new window above the tub. "By far my favorite thing about the bathroom is how light and airy it is," she says. "Honestly, we feel like we are in a tree house."

RESOURCES BEGIN ON PAGE 106.

**ABOVE LEFT:** The glass globe on the polished-nickel sconce mimics the tile's shape. **LEFT:** Separate tub and shower area topped Meredith's wish list. **OPPOSITE TOP:** Designer Leslie Huntley used penny-round tiles on the shower floor for better traction but basic subway tiles on the walls. **OPPOSITE BOTTOM:** A hand shower and high-arch faucet make bathtime convenient.

## budget

### Cabinetry

Hardware	42
Vanity	3,200

### Plumbing

Faucets	778
Shower fixtures	1,063
Sinks	250
Toilet	354
Tub	1,089
Tub fixtures	1,237

### Surfaces

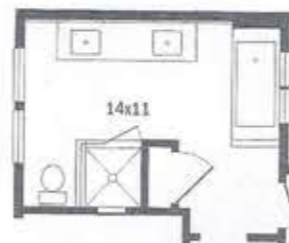
Countertop and tub surround	3,000
Paint	142
Shower enclosure	1,500
Shower tiles	500
Wall tiles	500

### Miscellaneous

Light fixtures	756
Medicine cabinets	1,470
Window	750
Window treatment	246
Wood planks and trim	400

**Total** **\$17,277**

Costs do not include labor unless noted.



To accommodate a separate tub and shower, the toilet stayed in the room—rather than in a separate water closet—but gained a privacy wall.





Room size  
253 sq ft

Budget  
\$24,688

Why we love it  
The tomato-red island  
packs a punch.

High-gloss white cabinets on the perimeter of this kitchen contrast with the dynamic island and wood countertops. "The homeowners liked the idea of a red island because it seemed like a good 'hungry' color for a kitchen," designer Leslie Huntley says.

# red, white & new

Stock and custom features give this family-friendly kitchen an A+.

WRITER AND FIELD EDITOR LISA MOWRY  
PHOTOGRAPHER BRIE WILLIAMS  
STYLIST ANDREA CAUGHEY







**THIS PHOTO:** The homeowners often use all six burners when cooking for their family of five. **OPPOSITE LEFT:** A strip of stainless-steel backsplash under the window makes a seamless, easy-to-clean surface above the undermount stainless-steel apron-front sink. **OPPOSITE RIGHT:** Tucking the microwave and toaster oven into the wall cabinet preserves valuable counter space.

Cherry Tomato  
(SW6864)  
Sherwin-Williams



## compliments come easily

to this vibrant remodeled kitchen in Asheville, North Carolina, which is the hub of Meredith Candler's busy home. Sure, the pops of red and fun fabric are the starring

attractions, but once guests see how organized and efficient the room is, their kitchen envy grows.

"Our wish list was a wee bit extensive," Meredith says. "We spend a lot of time in the kitchen. Our two older boys are homeschooled, and our youngest is home all afternoon. To top it off, my husband, Pete, works from home, so we have breakfast, lunch, and dinner in our kitchen as a family." The Candlers needed an eat-in kitchen, plus storage for their extensive cookware, school projects, and Pete's collection of cookbooks. Because they're serious cooks, a professional-grade range was essential, too.

Kitchen designer Leslie Huntley was able to accomplish all this—on a budget—in a 23x11-foot space without taking down a single wall. Adjusting the layout from a U shape to an L shape with an island eliminated the empty space in the center of the room. "Technically, the kitchen is probably too narrow for an island, but Meredith and Pete prefer that layout versus always having their back to the room when cooking."

Huntley says. A two-level island houses the range and electrical outlets for small appliances.

To keep the budget in check, everyone agreed on stock cabinets instead of custom. "Using IKEA was a no-brainer," Meredith says. The homeowners are partial to the clean look of all-white high-gloss cabinets, but they wanted the room to have warmth, too. Wrapping the island's stock cabinets with a red-painted wood surround achieved their goal. The island spices up the room, and the slim, raised strip of walnut countertop adds a custom touch.

The banquette area is a convenient and stylish gathering spot. Easy-to-clean outdoor fabric covers the built-in seating and also appears as the café curtain above the sink, while the butcher-block tabletop mimics the kitchen counters. All of the repeated ideas are intentional. "For a smaller kitchen, it's nice that all of the surfaces are the same," Huntley says. "It appears more seamless."

RESOURCES BEGIN ON PAGE 106.





Paint your trim with a self-leveling paint to minimize wood grain.



# budget

## Appliances

Dishwasher	700
Range	2,800
Refrigerator	1,500
Vent hood	1,829

## Cabinetry

Cabinets	10,000
Hardware	375
Island surround, includes labor	2,500

## Plumbing

Faucet	219
Sink	417

## Surfaces

Backsplash	1,000
Countertop	800
Paint	107

## Miscellaneous

Dining chairs, 2	292
Dining table	703
Fabric for banquette and window treatment	120
French doors and trim kit	850
Light fixtures	476

**Total \$24,688**

*Costs do not include labor unless noted.*



**OPPOSITE:** Opting out of storage below the bench gives the banquette an open, airy look. Outdoor fabric is a practical seating cover for a household with children. **ABOVE:** A built-in desk area stores cookbooks and school supplies, a necessary convenience since homeowner Meredith Candler homeschools her children. **LEFT:** Back-painted glass tiles offer a modern twist on traditional subway tiles.



The French doors' width was reduced to create space for the banquette. A narrow island provides a focal point, allowing the cook a view of the living spaces.